

Fl.

Ob.

B♭ Cl.

Bsn.

f

(MPH)

p ∇ *f*

p whispering

On aeg

Vln.

Vla.

Vc.

D.B.

p whispering

It is time

p whispering

droa

p whispering

On aeg

17

Fl.

p

p

Ob.

p *mp*

B \flat Cl.

p

Bsn.

17

Vln.

sul.pont.

Vla.

pp *f* *p*

Vc.

D.B.

24

Fl.

Ob.

B♭ Cl.

Bsn.

p

mf

p

24

Vln.

Vla.

Vc.

D.B.

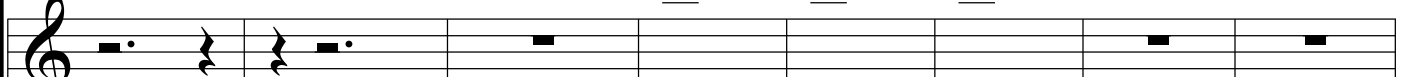
frullato



whispering

30

Fl.



On aeg

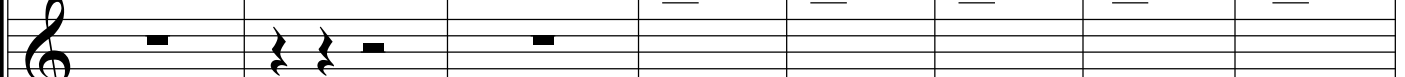
f

frullato



whispering

Ob.



It is time

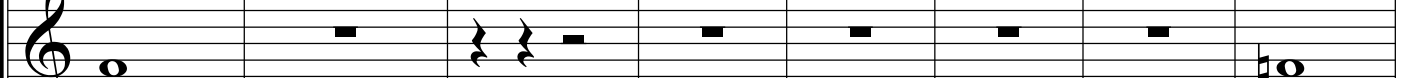
f ***p***

whispering

(MPh)



B \flat Cl.

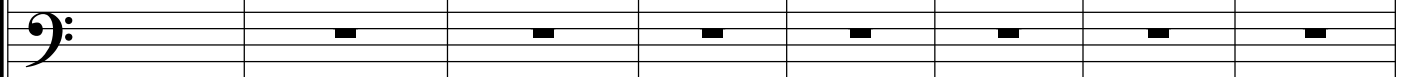


On aeg



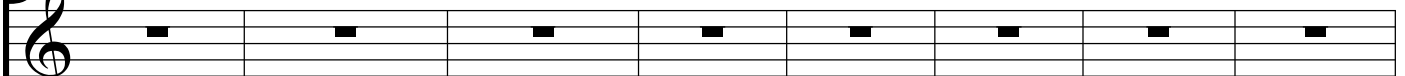
mp

Bsn.



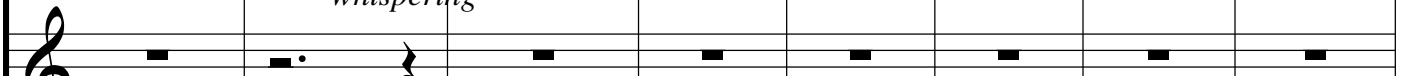
30

Vln.



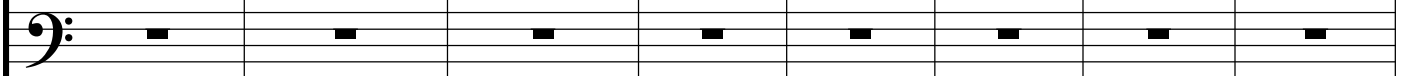
whispering

Vla.

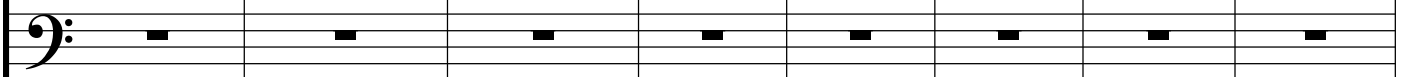


droa

Vc.



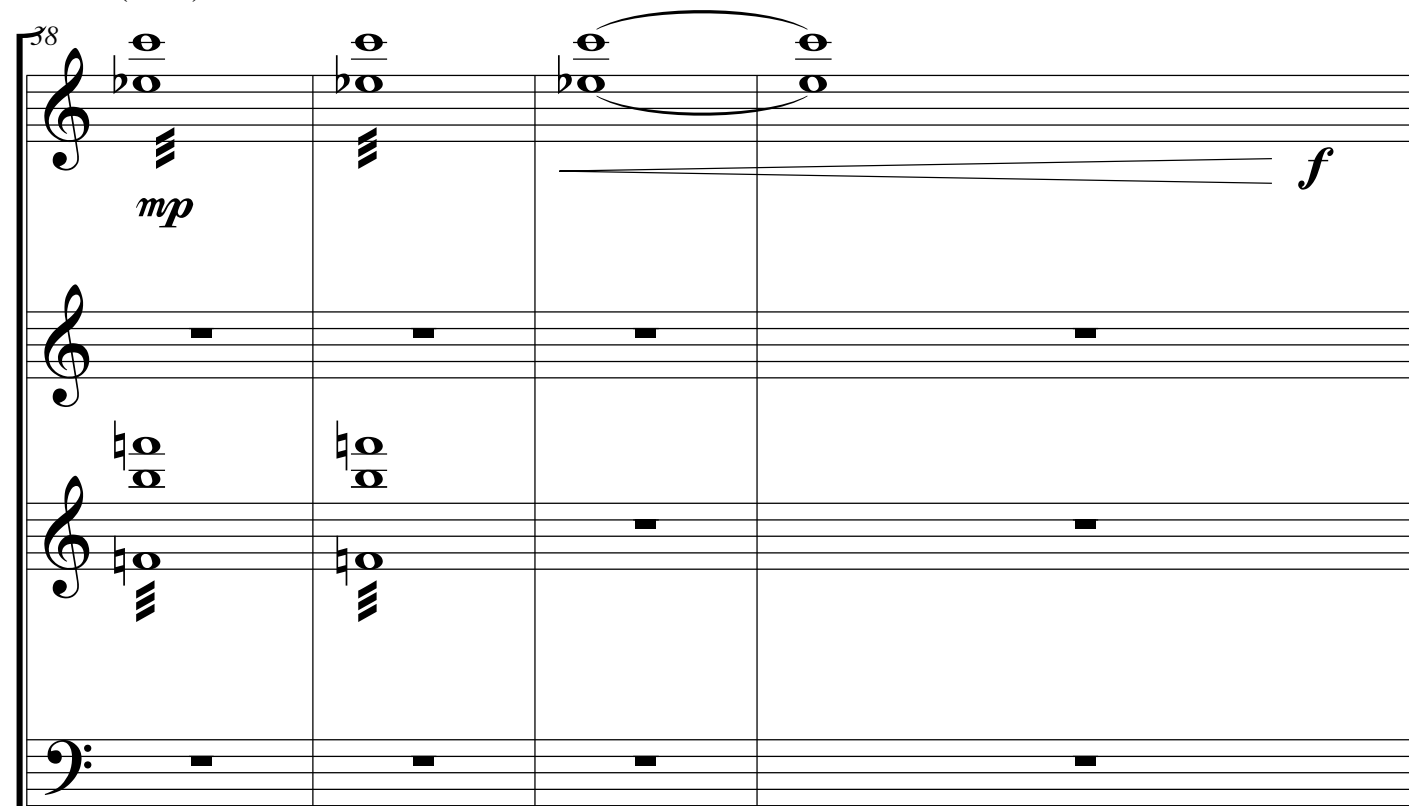
D.B.



(MPh)

38

Fl.



mp

f

Ob.

B♭ Cl.

Bsn.

Detailed description: This block contains the first four staves of a musical score. The Flute (Fl.) staff is in treble clef with a key signature of one flat and a common time signature. It starts with a dynamic marking of *mp* and features a melodic line with a slur over the first two measures and a crescendo leading to a dynamic marking of *f* in the fourth measure. The Oboe (Ob.), B♭ Clarinet (B♭ Cl.), and Bassoon (Bsn.) staves are in their respective clefs and contain rests for all four measures.

38

Vln.

Vla.

Vc.

D.B.

sul.pont.

mf *f*

7

Detailed description: This block contains the last four staves of a musical score. The Violin (Vln.) and Viola (Vla.) staves contain rests. The Violoncello (Vc.) staff is in bass clef and features a *sul.pont.* (sul ponticello) section starting in the fourth measure, marked with a dynamic of *mf* and a crescendo to *f*. The Double Bass (D.B.) staff contains rests. A fermata with the number '7' is placed over the *mf* dynamic marking in the Vc. staff.

42

Fl.

Ob.

B \flat Cl.

Bsn.

Vln.

Vla.

Vc.

D.B.

f

p

sul.pont.

f

p

f

f

vibrate the string strongly

vibrate the string strongly

Detailed description of the musical score: The score is for measures 42 through 48. The woodwind section (Flute, Oboe, B-flat Clarinet, Bassoon) has rests in measures 42-44. In measure 45, they play a half-note chord (F4, C5, G4) with a forte (*f*) dynamic. In measure 46, the chord is sustained. In measure 47, the dynamics change to piano (*p*). In measure 48, the chord is sustained. The string section (Violin, Viola, Violoncello, Double Bass) has rests in measure 42. In measure 43, they play a half-note chord (F2, C3, G2) with a forte (*f*) dynamic. In measure 44, the dynamics change to piano (*p*). In measure 45, the dynamics change back to forte (*f*). In measure 46, the dynamics change to piano (*p*). In measure 47, the dynamics change back to forte (*f*). In measure 48, the dynamics change to piano (*p*). Performance instructions include 'sul.pont.' for the strings in measures 43-44 and 45-46, and 'vibrate the string strongly' for the strings in measures 45-46 and 47-48.

49

Fl.

Ob.

B \flat Cl.

Bsn.

49

Vln.

Vla.

Vc.

D.B.

49

f

f

f

f

53

Fl.

Ob.

B \flat Cl.

Bsn.

53

Vln.

Vla.

Vc.

D.B.

mf *7* *ff*

gliss

56

Fl.

Ob.

B \flat Cl.

Bsn.

56

Vln.

sul.pont.

Vla.

mf ————— *f*

Vc.

mp

D.B.

mp

57

Fl. *p f p f p f p f*

Ob. *tr.(C-D)*

B♭ Cl. *p tr.(E-F#)*

Bsn. *p tr.(C#-D#)*

Vln. *f*

Vla.

Vc. *f*

D.B.

58

Fl.

Ob.

B \flat Cl.

Bsn.

p

ff

ff

f

f

f

ff

ff

sul.pont.

58

Vln.

Vla.

Vc.

D.B.

Detailed description: This is a page of a musical score, likely for a symphony or concert band. It features seven staves, each for a different instrument. The Flute (Fl.) staff is at the top, followed by Oboe (Ob.), Bassoon (B \flat Cl.), and Bassoon (Bsn.) in the middle section. Below these are the Violin (Vln.), Viola (Vla.), Violoncello (Vc.), and Double Bass (D.B.) staves. The score begins at measure 58. The Flute part has a rest for the first two measures, followed by a quarter rest, and then a series of notes starting with a flat, marked with a forte (*f*) dynamic. The Oboe and Bassoon parts have rests for the first two measures. The Bassoon part has a rest for the first two measures. The Violin part has a rest for the first two measures. The Viola part has a rest for the first two measures, followed by a half note marked with a sharp and a forte (*f*) dynamic, which is then sustained with a slur. The Violoncello part has a melodic line starting with a half note, followed by quarter notes, and then rests. The Double Bass part has a melodic line starting with a half note, followed by quarter notes, and then rests. Dynamics include *p* (piano) for the Bassoon, *f* (forte) for the Flute, Viola, and Violoncello, and *ff* (fortissimo) for the Double Bass. The instruction *sul.pont.* (sul ponticello) is written for the Bassoon.

60

Fl.

Ob.

B \flat Cl.

Bsn.

p

f

60

Vln.

Vla.

Vc.

D.B.

64

Fl.

Ob.

B♭ Cl.

Bsn.

64

Vln.


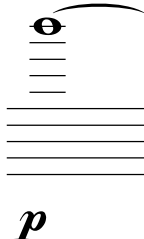







p molto sul.pont.

Vla.

Vc.

D.B.

Repete these three words (like phrase) three times slowly, whispering:
First time everything is p, only "On aeg" is F.
Second time everything is p, only "It is time" is F.
Third time everything is p, only "droa" is F.
(The whole time could be 25-30 seconds)

Fl.		<i>ON AEG</i>	<i>DROA</i>	<i>IT IS TIME</i>	
Ob.		<i>IT IS TIME</i>	<i>ON AEG</i>	<i>DROA</i>	
B \flat Cl.		<i>DROA</i>	<i>IT IS TIME</i>	<i>ON AEG</i>	
Bsn.		<i>IT IS TIME</i>	<i>DROA</i>	<i>ON AEG</i>	
Vln.		<i>DROA</i>	<i>IT IS TIME</i>	<i>ON AEG</i>	
Vla.		<i>ON AEG</i>	<i>DROA</i>	<i>IT IS TIME</i>	
Vc.		<i>IT IS TIME</i>	<i>ON AEG</i>	<i>DROA</i>	
D.B.		<i>ON AEG</i>	<i>DROA</i>	<i>IT IS TIME</i>	

75

Fl.

Ob.

B \flat Cl.

Bsn.

Vln.

Vla.

Vc.

D.B.

longue ram

ff

f

f

tongue ram

ord.

pp

mp

pp

mp

pp

mp

pp

mp

p

Detailed description: This is a page of a musical score, measures 75 and 76. The score is divided into two systems. The first system includes woodwind parts: Flute (Fl.), Oboe (Ob.), B-flat Clarinet (B \flat Cl.), and Bassoon (Bsn.). The second system includes string parts: Violin (Vln.), Viola (Vla.), Violoncello (Vc.), and Double Bass (D.B.).
- Flute: Measure 75 has a quarter note G \sharp with a fermata and a wavy line above it. Measure 76 has a quarter rest followed by a sixteenth-note triplet of G \sharp (marked *p*), A \sharp , and B \sharp .
- Oboe: Measure 75 has a quarter note G \sharp with a fermata, followed by eighth notes A \sharp , B \sharp , and C \sharp . Measure 76 has a quarter rest.
- B-flat Clarinet: Measure 75 has a quarter note G \sharp with a fermata, followed by eighth notes A \sharp , B \sharp , and C \sharp . Measure 76 has a quarter note G \sharp with a fermata, followed by eighth notes A \sharp , B \sharp , and C \sharp . The notation includes 'x' marks and accents (>) under the notes. Dynamics range from *f* to *ff*. The instruction 'longue ram' is written above the staff.
- Bassoon: Measure 75 has a quarter rest. Measure 76 has a quarter note G \sharp with a fermata, followed by eighth notes A \sharp , B \sharp , and C \sharp . The notation includes 'x' marks and accents (>) under the notes. Dynamics range from *f* to *ff*. The instruction 'tongue ram' is written below the staff.
- Violin, Viola, Violoncello, and Double Bass: All four string parts have a half note G \sharp with a fermata in measure 75. In measure 76, they have a half note A \sharp with a fermata. Dynamics range from *pp* to *mp*. The instruction 'ord.' is written above the first measure of each string part.

77

Fl.

Ob.

B \flat Cl.

Bsn.

77

Vln.

Vla.

Vc.

D.B.

80

Fl.

Ob.

B \flat Cl.

Bsn.

mp

p

droa

f It

80

Vln.

Vla.

Vc.

D.B.

f

p

p droa

83

Fl. *rit.* *f* *rit.* *p* *whispering* **droa**

Ob. *mp* *rit.* *whispering* *p* **On aeg**

B♭ Cl. *whispering* *rit.* *f* **On** *p* *f* *p* *whispering* **droa**

Bsn. *p* *rit.* *f* **On** *p* *f* *p* *whispering* **It is time**

Vln. *rit.* *f* *time* *f* *p* *f* *p* *p* *whispering* **On aeg**

Vla. *f* *rit.* *pp* *<* *f* *p* *whispering* **droa**

Vc. *rit.* *f* *f* *f* **Is aeg** *pizz.* *whispering* *p* **It is time**

D.B. *rit.* *f* *f* *f* **aeg** *pizz.* *whispering* *p* **droa**